

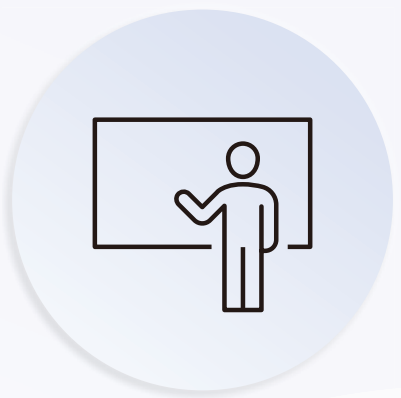
ViewBoard® 52 Series

---

*Today's lessons  
made easy*

Available sizes: 65"/75"/86"





## **For Teachers**

Instant Connectivity  
Seamless Usability  
User-Friendly Software



## **For Students**

Inclusive Collaboration  
Advanced Eye-Care Technology  
Integrated Sound

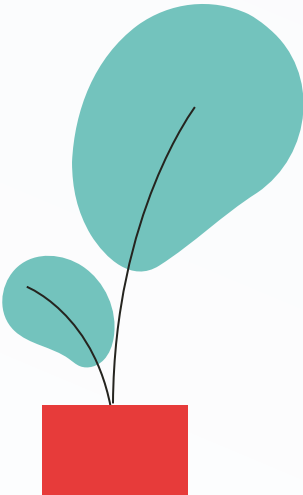


## **For Schools**

Simplified Management  
Software Compatibility  
Safety and Security

# Contents

- ◆ **Designed for Teachers .....4**
  - Instant Connection via USB-C.....5
  - Industry-First User-Centric Design.....6
  - Wireless Connection via vCastSender .....7
  - Easy Casting via myViewBoard Display .....7
  - Easy Access Shortcut Keys .....8
  
- ◆ **Built for Students.....9**
  - Best-in-Class Collaboration Tools .....10
  - Industry-Leading Classroom Sound .....11
  - Advanced Eye-Care Technology .....11
  
- ◆ **Centralised Management for Schools.....12**
  - Remote Management System .....13
  - Device Agnostic and Software Compatible.....13
  - Enterprise-Grade Safety and Security .....14
  
- ◆ **Additional Special Features.....15**
  - Advanced Screen Bonding Technology .....16
  - Immersive Front-Facing Speakers.....16
  - Responsive 8-Mic Array .....17
  - Upgraded System Configuration .....17



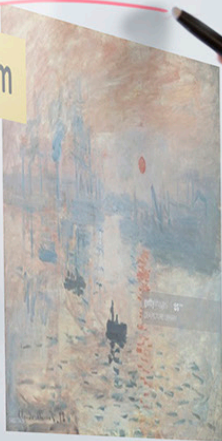
# Designed for Teachers

User-centric and digitally styled to support lessons that flow.



Share the whole classes and notes with pictures

## Impressionism



Def.

An art movement that originated in the late 19th century in Paris as an artistic reaction to the rapidly changing urban environment.

Tones.

Vibrant colors, unusual visual angles.

Artwork & Artist.

- The card players by Paul Cézanne
- Paris Street in Rainy weather by Gustave

## Post-Impressionism



An art movement that originated in the same century in France as a reaction to impressionism.

Thick layers, swirling brush, unnatural or arbitrary colors used to express motion.

- The Starry Night by Vincent Van Gogh
- Woman with a Parasol by Claude Monet



## Instant Connection via USB-C

A single-cord solution for data, video and power with no preparation or technical know-how required. Teachers simply plug-and-play for immediate presentation, whiteboarding, and collaborative functionality using the familiar software of their own device.

## Industry-First User-Centric Design

The unique angular design puts the control buttons and I/O ports clearly in line of sight, giving teachers easier access than competing products and allowing them to seamlessly and creatively incorporate the display into classes without disrupting the lesson flow.



## Wireless Connection via vCastSender

No cable required. ViewSonic's vCastSender application allows teachers to connect wirelessly through a one-time password for cable-free classes with complete functionality of the display's presentation and collaboration tools.



## Easy Casting via myViewBoard Display

Ideal for quick presentations and guest users, myViewBoard Display allows users to cast directly to the ViewBoard 52 via their internet browser for instant screen-mirroring with no cable or download necessary.



## Easy Access Shortcut Keys

Designed for simplified control, the easily accessible shortcut keys allow teachers to instantly disable the touch function when not required and to freeze the display screen for independent use of their personal device during presentations.



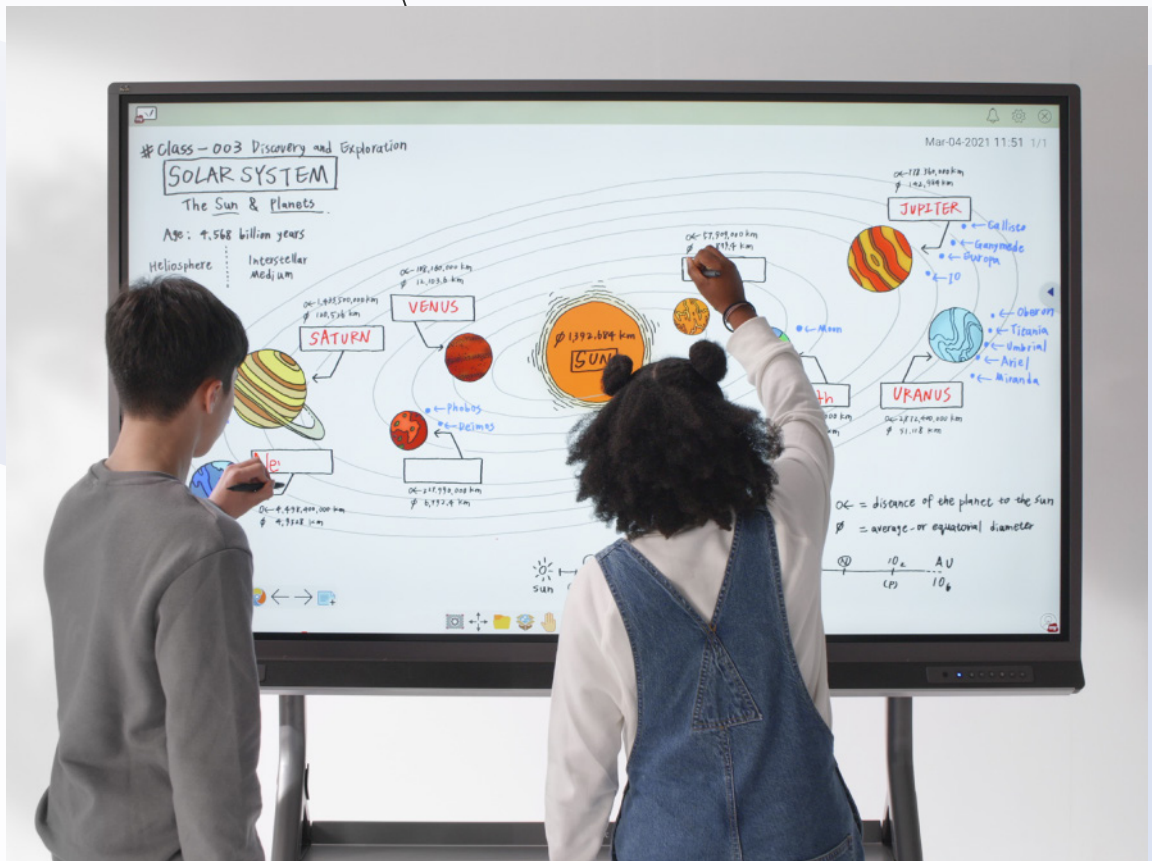
# Built for Students

Intuitive digital collaboration  
with eye-care technology.



## Best-in-Class Collaboration Tools

The 4K Ultra HD display comes equipped with Ultra Fine Touch and palm awareness technology to deliver a completely natural writing experience with dual-pen, 33-point touch capability to support in-class or online student collaboration.





## Industry-Leading Classroom Sound

Designed to fill the classroom with robust, attention-grabbing sound, the ViewBoard 52 Series features 2x15W speakers and a 15W subwoofer embedded within the front-facing soundbar to further amplify the impact of in-class music and videos for increased overall engagement.



## Advanced Eye-Care Technology

With True Flicker-Free technology, a blue light filter, and an anti-glare coating all built directly into the display hardware, the ViewBoard 52 Series offers an automatic, superior viewing experience that is both eye friendly and energy efficient.



# Centralised Management for Schools

User-friendly remote management via  
desktop or mobile.

# Remote Management System

The browser-based myViewBoard Manager application allows IT managers and verified admin users to update, schedule, broadcast and manage multiple displays simultaneously from any location through a secure, user-friendly remote management system.



## Device Agnostic and Software Compatible

Designed to use the software you know, the ViewBoard 52 Series operates on Android 9.0 and is compatible with Windows, Mac, Chrome and Linux with full touch input functionality for all connected devices.



## **Enterprise-Grade Safety and Security**

The built-in AWS-powered myViewBoard™ whiteboarding software provides comprehensive and trustworthy data protection through cloud-powered security and encryption to ensure the security and safety of private files and information.



## Additional Special Features

Upgraded for a better teaching and learning experience.



## **Advanced Screen Bonding Technology**

By reducing the space between the glass and the panels to a single millimeter, advanced bonding technology brings even brighter, better, and clearer visuals to an already impressive display.



## **Immersive Front-Facing Speakers**

Recognising the power of sound in student engagement, the in-built speakers are positioned front and center to fill the room with rich audio that ensures every detail can be heard.





## Responsive 8-Mic Array




An in-built 8-mic array with acute noise detection and cancellation capability. Combined with another industry-first feature within the ViewBoard 52 Series, teachers facilitating distance or hybrid learning from their personal device can easily access the 8-mic array and any connected visualizer to select the most appropriate camera and mic source.



## Upgraded System Configuration

The ViewBoard 52 Series is pre-installed with a powerful Quad Core A73 CPU, 4GB RAM, 32GB ROM, and runs on the Android 9.0 operating system to be more compatible with the latest apps.

# Specifications

Model		IFP6552-1A/IFP6552-1B	IFP7552-1A/IFP7552-1B	IFP8652-1A/IFP8652-1B
Model				
Display	Panel Size	65"	75"	86"
	Type/Tech	TFT LCD Module with DLED Backlight.		
	Aspect Ratio	16:9		
	Native Resolution	UHD 3840 x 2160 (Pixels)		
	Brightness	400 nits (typ.)		
	Contrast Ratio	1200:1 Typ. , 5000:1 Max.(DCR enable)		
	Response Time	8ms		
	Viewing Angles	H = 178, V = 178 typ.		
	Backlight Life	50,000 Hours (Typ.)		
	Surface Treatment	Hardness: 7H Anti glare + Anti fingerprint coating		
Platform	Processor	ARM Cortex A73*4		
	RAM	LPDDR4: 4GB (IFP6552-1A) 8GB (IFP6552-1B)	LPDDR4: 4GB (IFP7552-1A) 8GB (IFP7552-1B)	LPDDR4: 4GB (IFP8652-1A) 8GB (IFP8652-1B)
	Storage	32GB (IFP6552-1A) 64GB (IFP6552-1B)	32GB (IFP7552-1A) 64GB (IFP7552-1B)	32GB (IFP8652-1A) 64GB (IFP8652-1B)
Touch	Type / Tech	UFT (Ultra-Fine Touch) Technology		
	Touch Point	Windows: 33 points touch / Android: 20 points touch		
	Response Time	≤10ms	≤10ms	≤11ms
	Scan rate	≥100HZ	≥100HZ	≥90HZ
	Accuracy size	+/- 1mm		
	Pen tips size	2.5mm/8mm		
	Palm resistant	YES		
INPUT	HDMI-IN	x3		
	RGB / VGA	x1		
	DisplayPort	x1		
	Audio	x1 (PC audio in)		
	RS232	x1		
	OPS	x1		
	HDMI-OUT	x1		
Audio	x1 (Earphone out)			
SPDIF	x1 (optical)			
LAN	RJ45	x1		
USB	Type A	USB 2.0 x1; USB 3.0 x4		
	Type B	x2, for touch		
	Type C	Power Delivery 60W PD / DP1.2 / 100M Ethernet/USB3.0		
SPEAKERS		15W x 2 + 15W x 1 subwoofer		
Microphone		8 array microphone		
Embedded OS		Android 9		
Bundle Software	Basic Annotation Software	myViewBoard Whiteboard		
	Pro Annotation Software	myViewBoard whiteboard for Windows (embedded in Optional VPC)		
	Wireless Casting	ViewBoard Cast / MyViewBoard Display		
	Remote Device Management	myViewBoard Manager		

Model		IFP6552-1A/IFP6552-1B	IFP7552-1A/IFP7552-1B	IFP8652-1A/IFP8652-1B
<b>Special Features</b>	SmartPort™ USB	USB 3.0 port (auto switch between ViewBoard/PC/External laptop)		
	BYOM	Share AV USB-peripherals to external laptop via USB-C or Touch USB cable		
	Windows ink	Yes		
	LAN sharing between ViewBoard & PC	10/100/1000M for ViewBoard/PC source, 100M for USB-C		
	Light sensor	Yes		
	Flicker Free	Yes (in every brightness level)		
	Voltage	100-240VAC +/- 10% Wide Range		
<b>Power</b>	Consumption	190W (Typ.) < 0.5 W ("Off")	227W (Typ.) < 0.5 W ("Off")	332W (Typ.) < 0.5 W ("Off")
	Wall Mount (VESA®)	600 x 400	800 x 400	800 x 600
	Temperature (°C)	0°C to 40°C		
<b>OPERATING CONDITIONS</b>	Humidity	20% ~ 80% RH Non-Condensing		
	<b>DIMENSIONS (W x H x D)</b>	Physical (inch / mm)	1509.1 (W) x 955.4 (H) x 119.1 (D) mm 59.41 (W) x 37.61 (H) x 4.69 (D) inch	1720.1 (W) x 1069.6 (H) x 118.4 (D) mm 67.72 (W) x 42.11 (H) x 4.66 (D) inch
Packaging (inch / mm)		1660 (W) x 1045 (H) x 245 (D) mm 65.35 (W) x 41.14 (H) x 9.65 (D) inch	1880 (W) x 1160 (H) x 280 (D) mm 74.02 (W) x 45.67 (H) x 11.02 (D) inch	2140 (W) x 1340 (H) x 280 (D) mm 84.25 (W) x 52.76 (H) x 11.02 (D) inch
<b>WEIGHT</b>	Net (lb / kg)	96.78 lb / 43.9 kg	125.22 lb / 56.8 kg	156.53 lb / 71.0 kg
	Gross (lb / kg)	122.14 lb / 55.4 kg	158.95 lb / 72.1 kg	196.43 lb / 89.1 kg
<b>REGULATIONS</b>		cTUVus, FCC, EPEAT, Mexico coc, Mexico Energy, RoHS, Energy Star 8, CEC,EMC/CE, CB, RoHS & DOC, REACH, WEEE, ErP. EEI,RCM, BIS, PSE, VCCI,CCC, CECP	cTUVus, FCC, EPEAT, Mexico coc, Mexico Energy, RoHS, Energy Star 8, CEC,EMC/CE, CB, RoHS & DOC, REACH, WEEE, ErP. EEI,RCM, BIS, PSE, VCCI, BSMI,CC, CECP	cTUVus, FCC, EPEAT, Mexico coc, Mexico Energy, RoHS, Energy Star 8, CEC,EMC/CE, CB, RoHS & DOC, REACH, WEEE, ErP. EEI,RCM, BIS, PSE, VCCI, BSMI, CCC, CECP
<b>Low Blue light (LBL certificate)</b>		Yes		
<b>Energy Star version</b>		ES8.0		
<b>EEL rating</b>		A+		
<b>PACKAGE CONTENTS</b>		1. Power cable (3 meters) 2. Remote control 3. USB Type-C cable (1.5 meters) 4. USB Touch cable (3 meters, USB2.0) 5. Touch pen x 2 6. Quick Start Guide + Compliance statement 7. RS232 adapter 8. Clamp x 5 9. Camera Plate 10. Screw x 8 (camera 2+2, wall mount 4) 11. HDMI cable (3 meters) 12. Eraser 13. AAA Battery x 2	1. Power cable (3 meters) 2. Remote control 3. USB Type-C cable (1.5 meters) 4. USB Touch cable (3 meters, USB2.0) 5. Touch pen x 2 6. Quick Start Guide + Compliance statement 7. RS232 adapter 8. Clamp x 5 9. Camera Plate 10. Screw x 8 (camera 2+2, wall mount 4) 11. HDMI cable (3 meters) 12. Eraser 13. AAA Battery x 2	1. Power cable (3 meters) 2. Remote control 3. USB Type-C cable (1.5 meters) 4. USB Touch cable (3 meters, USB2.0) 5. Touch pen x 2 6. Quick Start Guide + Compliance statement 7. RS232 adapter 8. Clamp x 5 9. Camera Plate 10. Screw x 8 (camera 2+2, wall mount 4) 11. HDMI cable (3 meters) 12. Eraser 13. AAA Battery x 2

## Reseller Information



142B Park Drive, Milton Park, Milton,  
Abingdon, Oxfordshire, OX14 4SE

Email: [getintouch@rm.com](mailto:getintouch@rm.com)

Contact Number: +44 (0)1235 645 316



For more information contact your representative today.

Email: [sales-uk@viewsonic.com](mailto:sales-uk@viewsonic.com)

Contact Number: +44 (0) 207 382 8250

[www.viewsonic.com](http://www.viewsonic.com) / [www.myviewboard.com](http://www.myviewboard.com)