



**GDPR in UK
schools &
colleges**

Research commissioned by Trend Micro and RM Education in November 2018



156 individual UK schools and colleges completed the survey.

Q. How many questioned contributed to their school's and college's GDPR strategy?



86%
Yes



14%
No



94%

have influence or have final say on **IT decisions** within their school/ college.

Respondent breakdown

51%



IT Manager/
Head of IT

11%



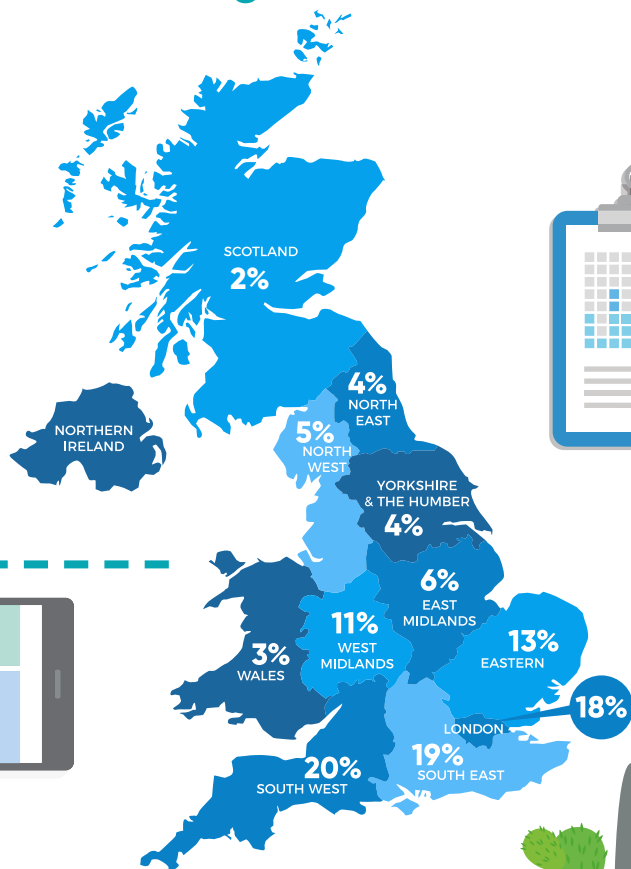
Data Protection
Officer (DPO)

34%



Other:
SLT, Governors
& Finance.

Q. Where is your school or college based?



Q. What involvement did they have in the IT decision making processes at their schools and colleges?



94%

have influence or have final say on IT decisions within their school/ college.

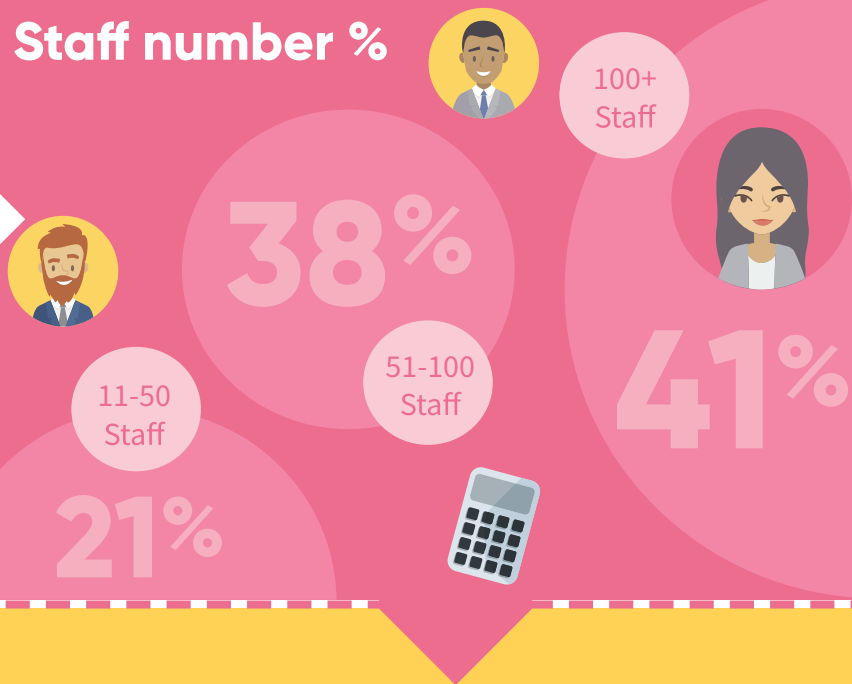
Q. What was the level of respondents?



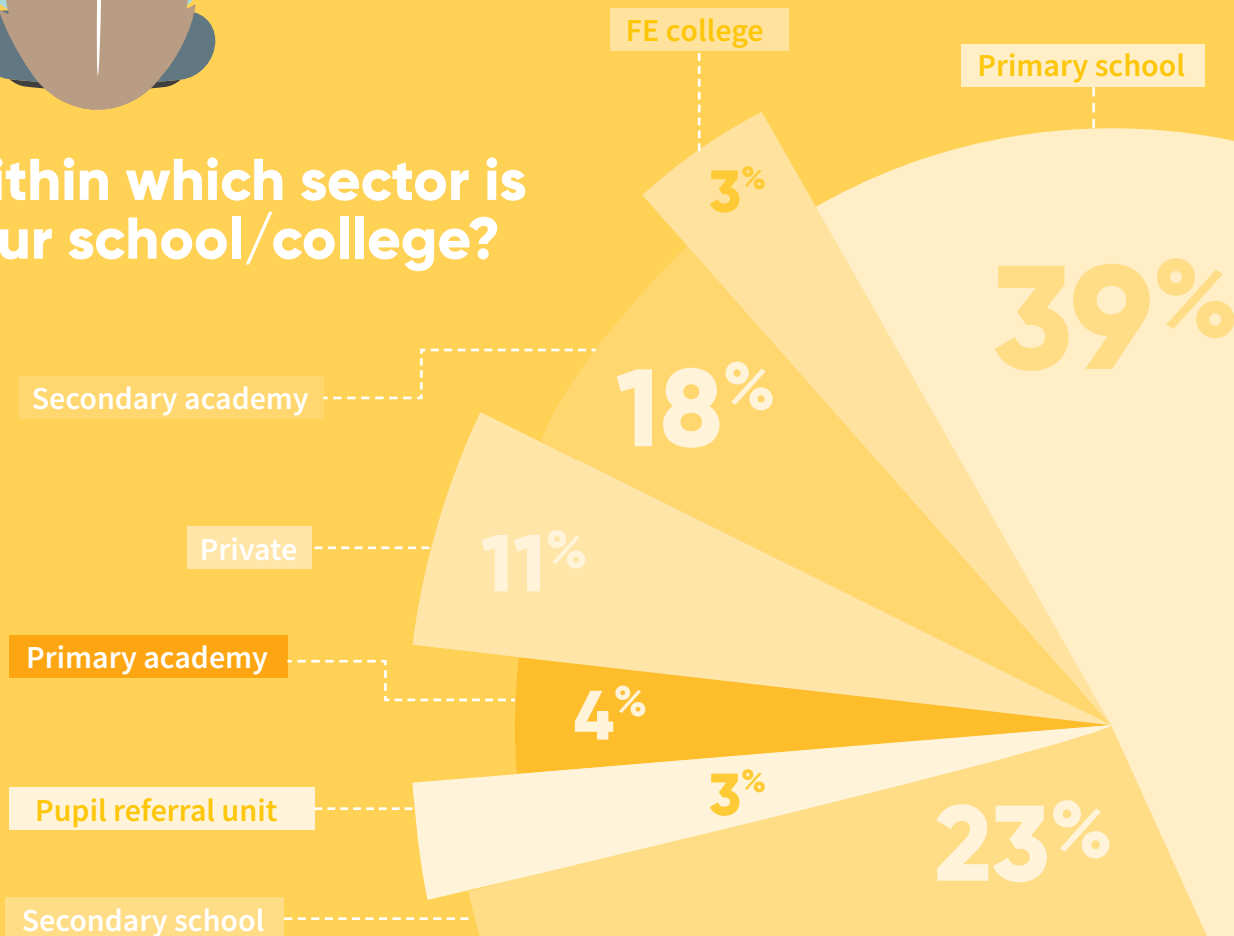
Q. How many employees work in your school or college?



Staff number %



Q. Within which sector is your school/college?



Q. How many had sought 3rd party advice on their GDPR readiness?

Yes
78%

No
22%



Did they believe their school/college was fully compliant with the new regulation?

48%

Believe they are fully compliant with GDPR

14%

We don't have a clear plan to become GDPR compliant

52%

Do not believe they are fully compliant with GDPR



Q. Could they demonstrate a clear plan to becoming fully compliant?

✓ 85%
Yes

✗ 15%
No



Q. What steps had their schools/ colleges taken to comply with the General Data Protection Regulation?

97%

Updated their policies

89%

Increased staff training

85%

Hired a Data Protection Officer

83%

Carried out a data audit

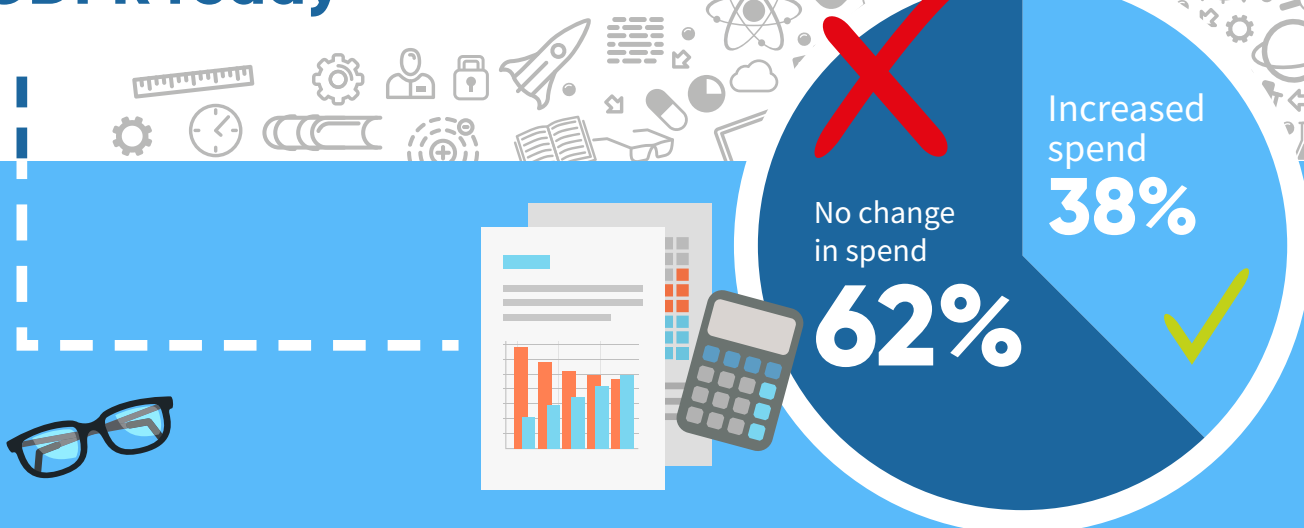


Q. Increased IT spend as part of becoming GDPR ready

No change in spend

62%

Increased spend
38%



Q. In respondees opinion, where did the responsibility lie for ensuring compliance with the General Data Protection Regulation?

60%
said final responsibility for GDPR sits with the Principal/Head Teacher”

42% said responsibility also sits with the DPO

31% responsibility also lies with the Head of IT

Note: Everyone is responsible no one party holds all the blame

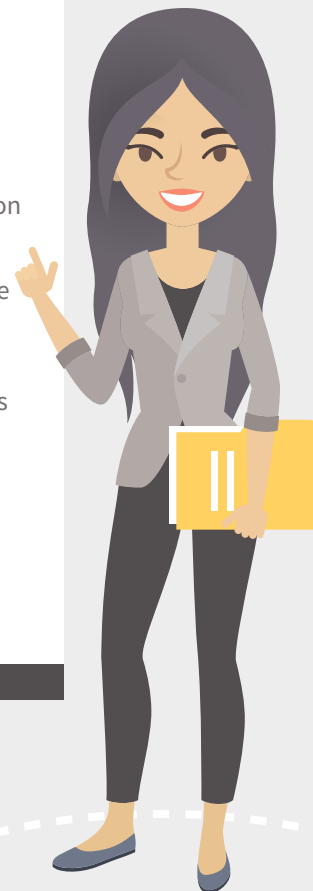
Q. The General Data Protection Regulation sets out to protect personal data.

Was their school/college aware of, and able to document, what kind of personal data it stores and where it is stored?

91%

YES we know where all our data resides; Including within 3rd party systems

Email addresses	Pupil/staff birthday lists
93%	96%
CCTV footage	Medical records
89%	99%
Pupil/staff photographs on school website	Payment information
96%	96%
Assessment results	Social care records
81%	95%
Governor meeting minutes	Responses Other
64%	9%
Postal addresses	
94%	



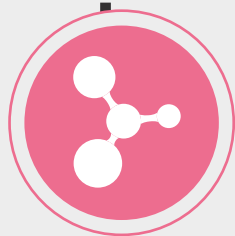
Q. Was their school/college able to demonstrate it had the right IT system, data protection and information security controls?



No
15%

Yes
85%

Q. What did they see as the biggest challenges for them to comply with data protection regulations?



23%
Legacy systems

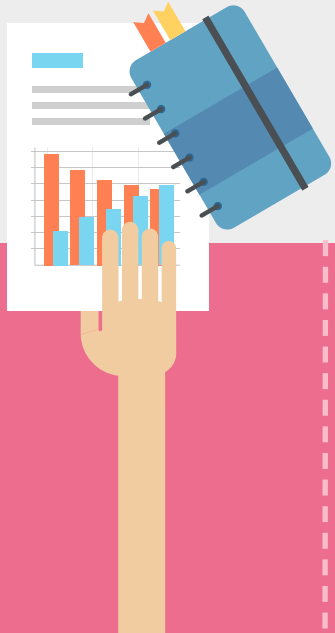


46%
Security awareness



31%
Lack of financial investment

Q. The GDPR outlines a right for an individual to have certain data deleted, so that forgotten third persons can no longer trace them. Did they have the adequate processes and technology to address any staff, pupil or parent's right to be forgotten requests?



The data
your school / college
collects on its
staff, pupils
and parents



The data
your third party agencies
collects on its
staff, pupils
and parents



The data
your cloud services providers
collects on its
staff, pupils
and parents



The data which
partners school/college
collects on its
staff, pupils
and parents

YES:

77%

56%

50%

52%

NO:

7%

6%

4%

6%

DON'T KNOW:

14%

36%

37%

34%

Q. Did their school/college have a formal process and data breach response plan in place?

**Yes
71%**

**No
29%**



50%

define State-of-the-art as coming from established market leaders

22%

stated cost is a bigger driver than state-of-the-art

1%

define State-of-the-art as coming from industry start-ups



The GDPR states that the controller or processor should implement **state of the art security** relative to the risks and the nature of the personal data to be protected. How did they define and select **State of the Art?**

8%

I don't know

7%

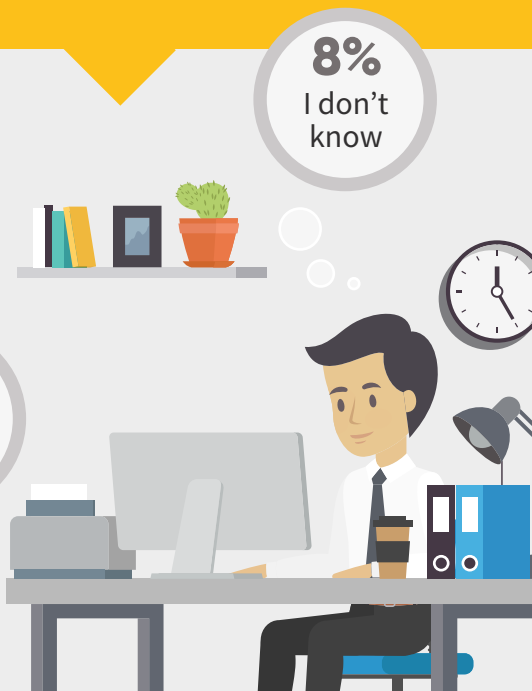
The service provider based in the US

Both are liable
33%

51%

The data owner based in the EU

Q. Under the General Data Protection Regulation rules, if EU data handled by a US service provider is breached, who did they think would be accountable?



Q. Did they believe their GDPR strategy involved moving some liability to 3rd parties, and particularly outsourced IT services, managed services or cloud providers?

33%

of all responses said they moved IT liability to 3rd parties as part of their GDPR strategy



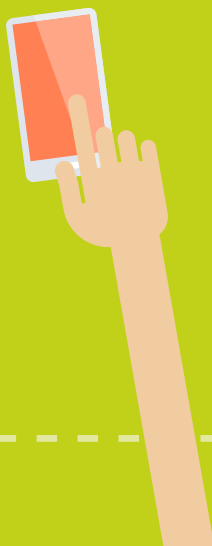
79% said financial fines would *significantly* impact the school or college

9% said *unlikely* there will be financial fines in our sector

Q. Under GDPR, how significant did the respondents think the fines would be for non-compliance, to their schools and colleges?



Q. Did they believe that staff, parents and pupils were now demanding more transparency with regard to how much of their personal data is being kept and where?



- **No** about the same amount - **56%**
- **Yes** slightly more - **19%**
- **No** parents and pupils never demand transparency - **14%**
- **Yes** significantly more - **5%**
- **Don't know** - **4%**
- **No** less than before - **2%**



Q. Were they confident that their school/college was as secure as it could be against a data breach?



Very confident



Somewhat confident



Neither confident or not confident



Not very confident



Not confident at all

Q. Were they investing in network next-generation intrusion prevention (NGIPS) or breach detection technologies?



51%
have not invested

17%
have invested

8%
also included sandboxing technology as part of their investment



Q. Were they confident that their systems had not already been compromised?

84%
Were confident

Q. Did they run regular PEN TESTS?

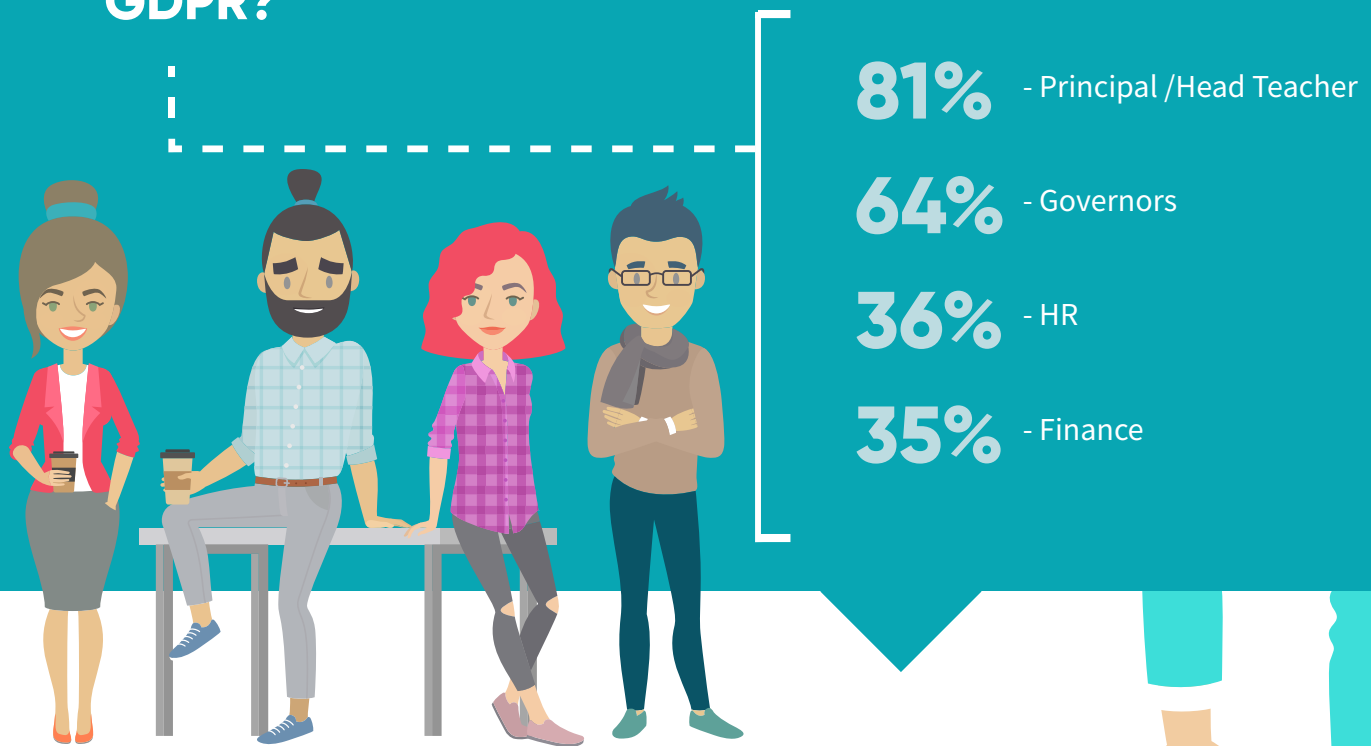
28%
Yes

44%
No

28%
I don't know



Q. Who was involved in preparing their school or college for GDPR?



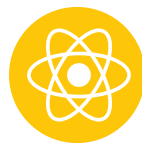
Q. What precautions had they taken to prevent the loss of personal data



94%
increased staff awareness and training on data security



85%
Improved password policy



70%
added some form of encryption technology



34%
added lock & wipe technology for lost devices



9%
invested in Data Loss Prevention (DLP) technology

Q. What did they consider was the biggest threat to data?



19%
Cyber criminals



75%
Accidental loss
by staff



6%
Other

38% Cyber criminals

3% Regulators

40% Loss of theft of devices

11% Parents/pupils

8% Other



Q. Which of the following did they see as the biggest risk to their school or college?

Q. Where did they obtain information on GDPR?

25%

Independent
Blogs

54%

Professional
Associations

59%

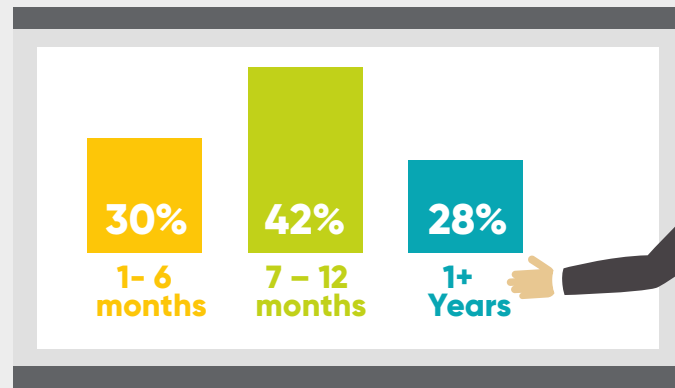
Local
Authority

73%

Information
Commissioners Office



Q. How much time had their school or college spent achieving or trying to achieve GDPR compliance?



Q. In the event of a breach, what did they believe would have the biggest impact on their school or college?

65%

said a data breach would have a significant impact on their finances and reputation

