

RM™ Unify



Version 1.34 Release Note



Welcome to v1.34 of RM Unify

The next release of RM Unify is here, and there are three new exciting changes to make you aware of. Now included within RM Unify are 'saved password apps' which provide schools with single sign-on access to services already in use by caching a user's credentials once. This new feature launches with the addition of more than ten saved password apps including RM apps such as RM Portico and CC4 Anywhere as well as third party apps such as Edmodo and Moodle.

We have also introduced two further changes in this release which make the management of apps and user accounts easier for staff. It's now possible to re-sync user accounts within apps via RM Unify, and to delegate admin user rights to multiple staff members.

This document will fill you in on the changes associated with the release, linked to a complementary blog available for viewing in the usual place: <https://rmunify.blogs.rm.com/rmunify-blog/>

Release Headlines

1. Introducing saved password apps Page 3 to 6

Positively impacts customers looking to access a range of their existing services via single-sign on access (after entering their existing credentials just once), using cached credentials. Available to all RM Unify Premium customers, with the exception of Glow Schools

2. School initiated re-sync of apps Page 6 to 8

Positively impacts customers looking to initiate a re-sync of user data within an app with RM Unify, where changes to users may have been made within an app. Available to all RM Unify customers

3. Delegated admin user rights Page 9

Positively impacts on a customer looking to change admin users and/or provide admin user rights to more than one member of staff. Available to all RM Unify customers



1. Introducing saved password apps

Today RM Unify provides full integration with an unrivalled range of apps relevant to UK Schools. This full integration means Schools can purchase subscriptions (from the App Library), manage users (within the Management Console), and offer single sign on access (via the Launch Pad) to users with absolute ease. We are proud of the technology that underpins this full integration and the benefits of central management it gives to customers. Hence we will continue to recommend it as the primary way to purchase new apps, and the recommended way for our App Providers to integrate with RM Unify too.

In this release though, we are introducing an alternative way to integrate apps with RM Unify which as a result increases the range of compatible apps yet more. We call them 'saved password apps'. Presented via the App Library alongside apps that offer full integration, in summary when added these apps ask users to enter their existing username and password for an app once (upon first click of a tile), and instantly save it into RM Unify in a safe and secure manner hence removing the need for it to be entered again, no matter what device is being used.

The release of saved password apps further cements RM Unify as the centre of Schools online world and local resources, particularly strengthening its ability to integrate existing apps with the RM Unify Launch Pad.

Whilst we will be adding new saved password apps all the time, we have included a selection of apps in our launch that responds to the very biggest demand we've gathered thus far:

- Edmodo
- Evernote
- GCSE Pod
- Moodle
- CC4 Anywhere
- RM Portico
- TES
- Oxford Owl
- Prezi
- RM Easymail
- RM IntegrisG2 (coming very soon!)

As with all other apps in RM Unify, saved password apps can be installed and managed via the App Library. They can be spotted in the App Library by the 'key' icon at the bottom left of the app tile.

To install a new saved password app, when logged in as the RM Unify Administrator simply head to the App Library and find the app you are looking for.

We understand that you may wish to integrate an existing service into your RM Unify account as a saved password app, and it may not already be available in the App Library. If you would like to request a new saved password app to be added to the App Library then we would love to hear from you. To request a new saved password app, email the RM Unify team at rmunify@rm.com and we'll get back to you.

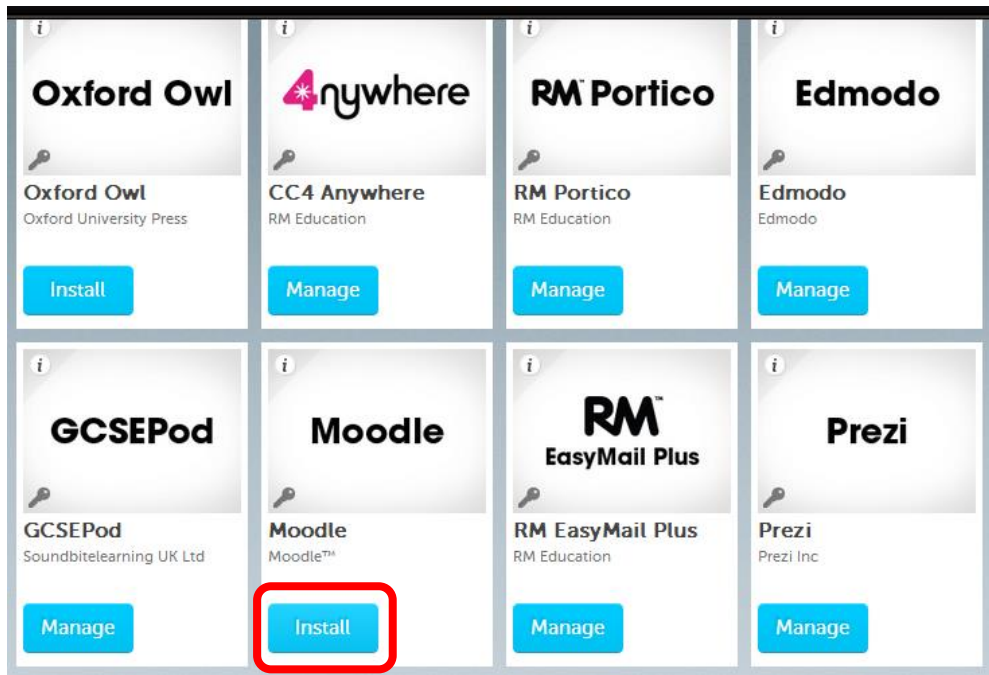


Fig 1.1: Saved password apps are identified by the 'key' icon on their tile image

Click **Install** for the app you wish to add.

You will now be presented with an important message which explains the type of app this is, and the way in which sign-on is delivered through RM Unify. You will be presented with this message only once. Please ensure you understand it, and notify us that you have read and understood it by clicking the **check box**.

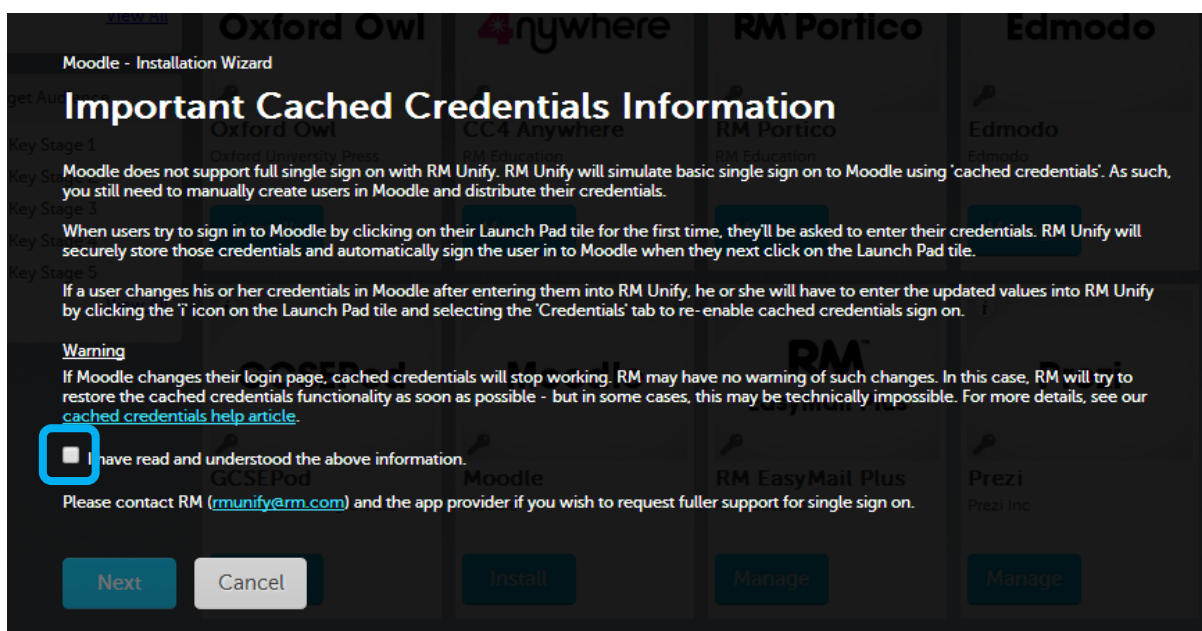


Fig 1.2: Please ensure you have read and understood the message before clicking the box



Once you have done this, it is possible that the nature of the app means you need to specify the **Destination URL** for the app login page you wish to access (if this is the same for all Schools this step will be automatically skipped). RM Unify will require this link in order to synchronise the login each time once the user launches in from the RM Unify Launch Pad.

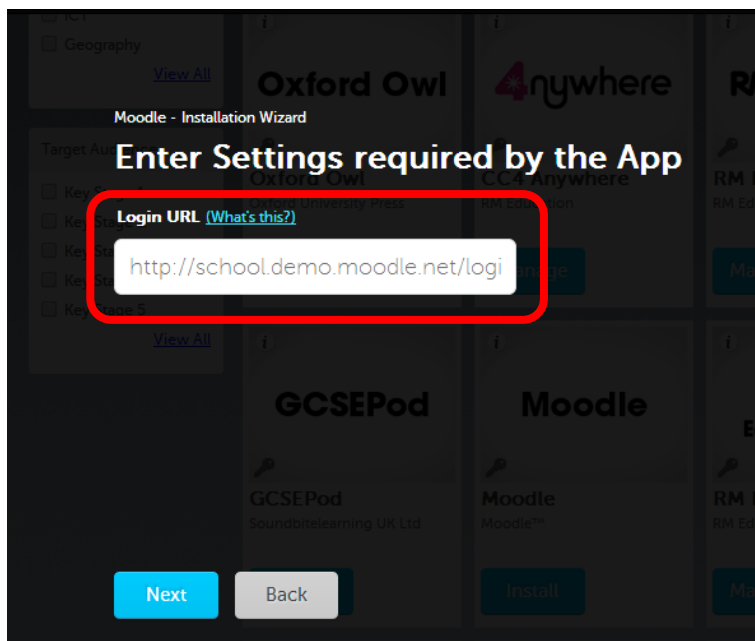


Fig 1.3: The destination URL is the webpage which houses the login form for the app you wish to access

Then, as with all installed apps, you can **select the user group(s)** which will have access to the saved password app by checking the relevant box(es). Then, select the Launch Pad(s) that the app tile will be made available on.

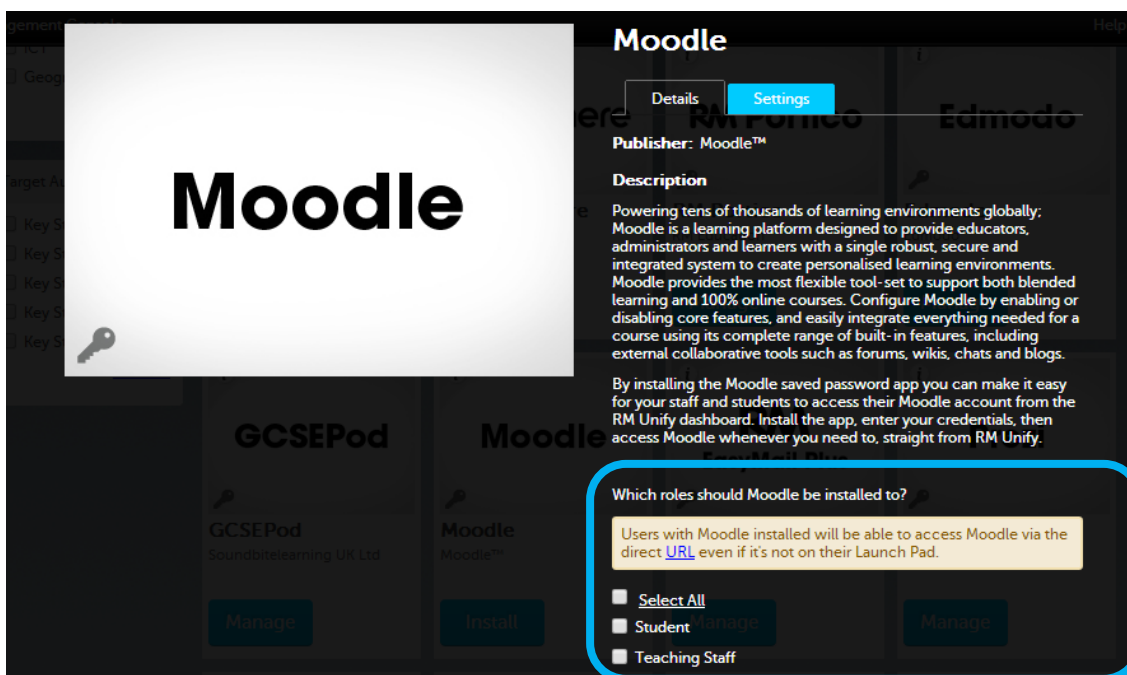
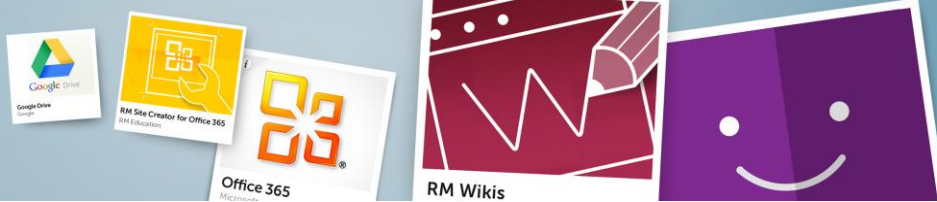


Fig 1.5: Select the user groups who will access the app

Once you have clicked ok, the app will immediately appear on your selected Launch Pads. From an administrative perspective the work is done but in order to set up the saved password



functionality, a user must enter their existing username and password for that app once, prior to launching it via RM Unify.

Let's switch to a typical user's perspective to see this in action, after clicking on any saved password app for the first time. In doing this you will now be presented with two fields to complete: **one for your username and one for your password**. Enter both, and click 'Save'. This automatically saves those details within RM Unify so that they are stored for future access. This positively impacts the user who can now access this existing service through RM Unify with one username and password.

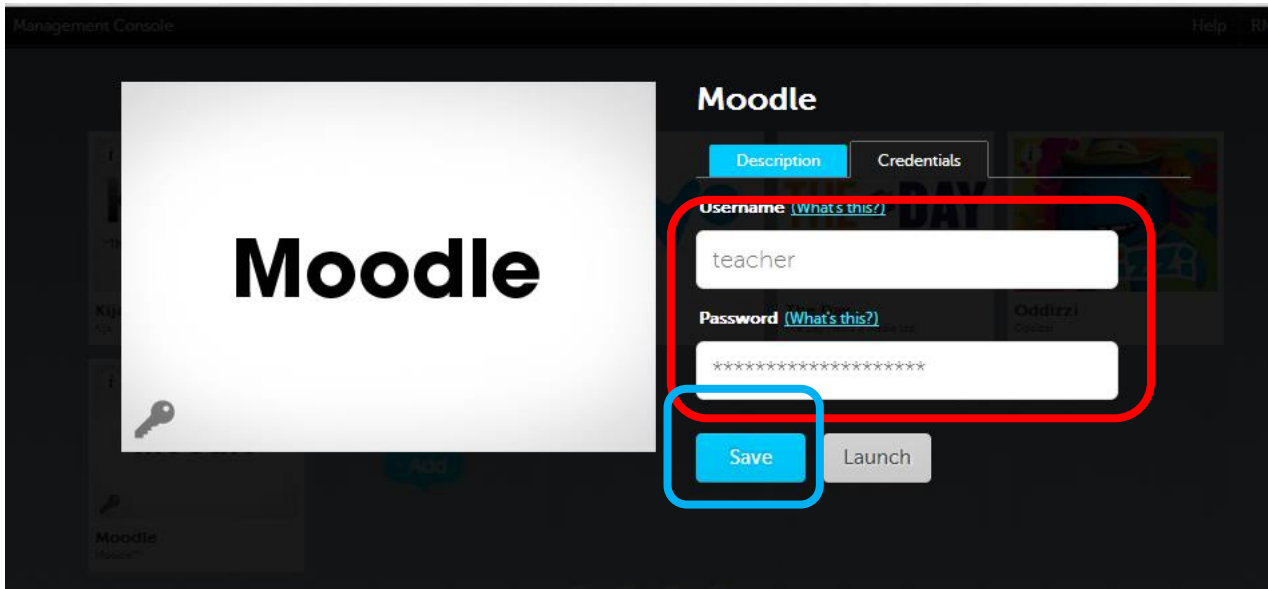


Fig 1.6: Enter your existing username and password for the app just once, and RM Unify will store it for future access

It is always possible for a user to change their saved username and password within the app by clicking on the 'i' icon on the top left hand side of the tile on the Launch Pad.

Full support information for saved password apps can be found on the [RM Unify Support Portal](#).



2. School initiated re-sync of apps

Today it is possible to re-sync user accounts via CSV and Active Directory services through the RM Unify Management Console. As of this release though, customers are also able to re-sync individual apps within RM Unify to ensure that user data is matched between RM Unify and apps. It is now possible for staff users to initiate a re-sync of an app at their own will. User data can now be synced and logged quickly, and easily!

To re-sync an app within RM Unify, find the app in the App Library and click **manage** (it's quicker to find apps you already have within the app library by clicking on 'My Establishment's Apps' at the top of the page).

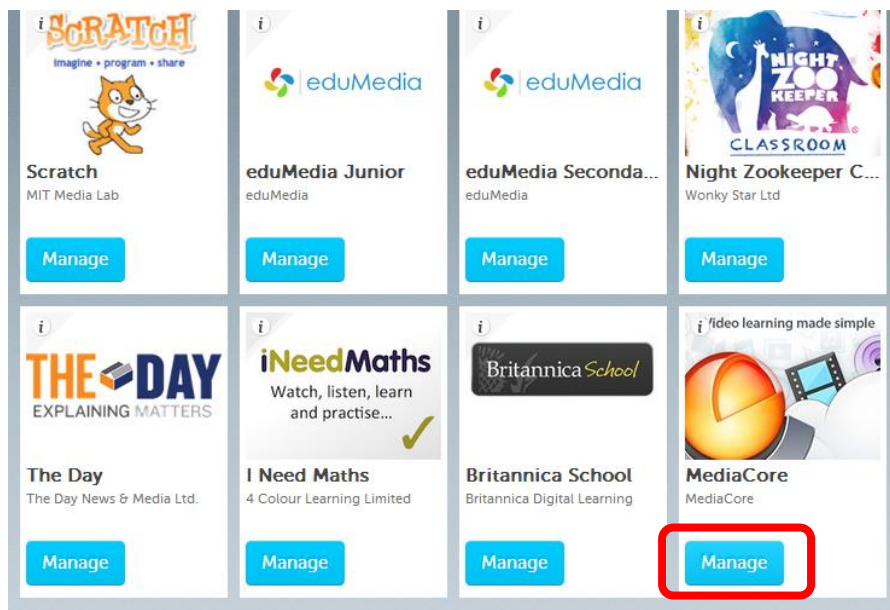


Fig 2.1: Perform tasks on an app you have already purchased by clicking 'manage' on the app tile within the app library.

It's now possible to re-sync user data within the app with your RM Unify data set. **Clicking the link below** will send a snapshot of users to the third party app from RM Unify, to subsequently sync the user data between the two. This ensures the seamless service from launching the application, to working within the application, and storing content and progress.

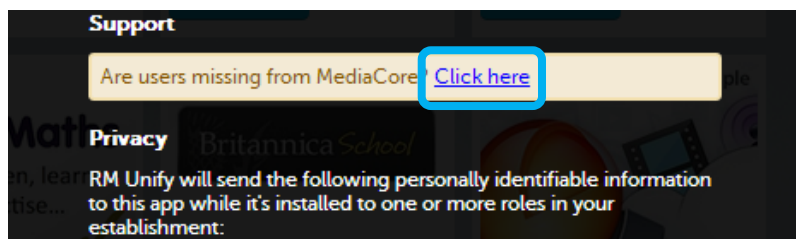


Fig 2.2: Re-sync of user data between RM Unify and third party apps is available for the majority of apps



Then, click the **'Resync users'** button to complete the process.

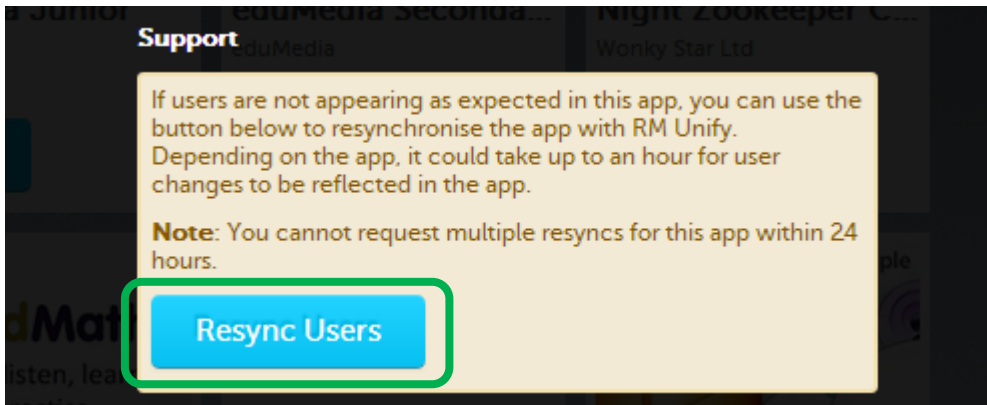


Fig 2.3: Each Resync usually take seconds to perform, but cannot be repeated more than once every 24 hours.

When you return to the App within the next 24 hours, you will see a **log** has appeared notifying you of the last time and date the sync was performed.

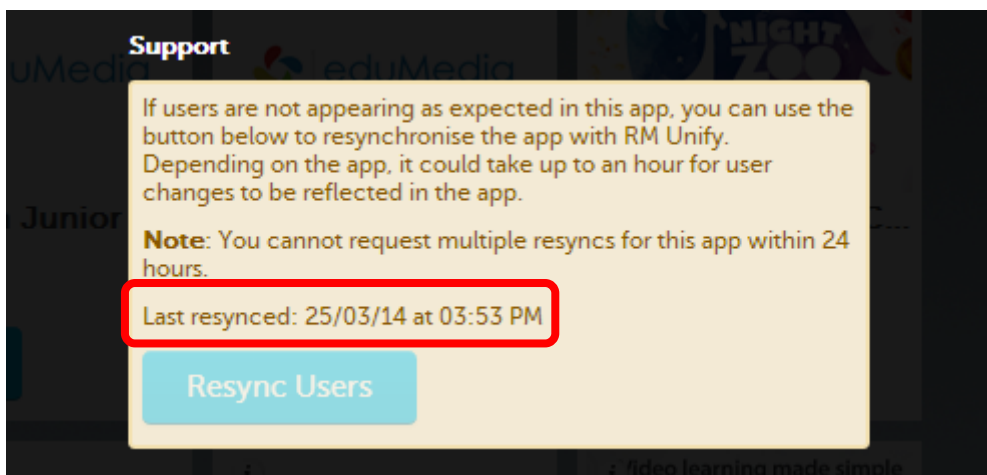


Fig 2.4: This notification will appear when a Resync has occurred within the last 24 hours.



3. Delegated admin user rights

It is now possible to change admin user permissions for users within RM Unify. Admin users have access to the Management Console to perform system admin tasks and can purchase new apps via the RM Unify app library. Delegating admin user rights to more than one staff member means more staff can make more changes to a school's RM Unify account.

It is very simple to give a user new admin rights, but it is only possible for an existing admin user to give do it, i.e. it is not possible for students or staff to make themselves an admin user in RM Unify.

Changes to users are made within the Management console. The User Summary shows the number of current users in each RM Unify role. Teaching staff, non-teaching staff and Governors can be admin users. Students cannot.

The prompt to delegate admin user rights has been added as a new **Action**. Click the drop down for the user you wish to provide admin rights for, and click **Give user admin rights**.

<input type="checkbox"/>	Toby	Levens	tobylevens@rmrealcentre	tobylevens@miltonparkschool.co.uk	<div style="border: 2px solid red; padding: 2px;"> Actions ▾ </div>
<input type="checkbox"/>	?	MAdmin	MAdmin@rmrealcentre	MAdmin@miltonparkschool.co.uk	View details Change Year Group <div style="border: 2px solid green; padding: 2px;"> Give user admin rights </div> Revoke user's admin rights
<input type="checkbox"/>	?	MAdmin	MLAdmin@rmrealcentre	MLAdmin@miltonparkschool.co.uk	<div style="border: 2px solid green; padding: 2px;"> Give user admin rights </div> Revoke user's admin rights
<input type="checkbox"/>	Bron	Musgrave	bronmusgrave@rmrealcentre	bronmusgrave@miltonparkschool.co.uk	<div style="border: 2px solid blue; padding: 2px;"> Actions ▾ </div>
<input type="checkbox"/>	?	PAdmin	PBAdmin@rmrealcentre	PBAdmin@miltonparkschool.co.uk	<div style="border: 2px solid blue; padding: 2px;"> Actions ▾ </div>

There is no limit to the number of admin users in RM Unify, though we recommend you keep it to a number which is easily managed by the school. Admin rights can be revoked easily using the same Actions List to perform this task.

To make this feature meaningful, let's recap the rights that come with being an administrator that hence can now be easily delegated throughout the School:

- Buy, install and manage apps from the App Library
- Create, install and manage Link Tiles from the App Library
- Sync and modify users from the Management Console
- Create and manage Groups and More Granular Launch Pads from the Management Console
- Edit and manage Launch Pad layout from the Launch Pad Edit Grid mode

For the latest information on the newest improvements to RM Unify and the addition of new apps, follow RM Unify on twitter: @RMUnify, or visit the [Trello Board](#).